

NCCU

Higher Education Sprout Project

Speech Series



English Department

Online Workshop

Generative AI and Digital Pedagogies

Generative AI tools, such as ChatGPT, enrich the inquiry-driven culture we live in. What is missing from the current debate are insights from the humanities. As a synthesis of human-generated datasets, AI is changing publics' relationship to themselves. Since ChatGPT remixes statistically most likely combinations of words, its outputs are in fact a form of theatrical performance. It draws on users' prompts and the publics' collective memories to produce improvised performances, within specific parameters, for its user-audiences. As a mirror held up to the humanity, ChatGPT produces a pixelated shadow of the publics in time. ChatGPT is therefore a survey instrument of the publics' collective biases. It is an aesthetic instrument rather than an epistemological tool. Based on this understanding, this interactive workshop provides pedagogical strategies and new AI-enhanced pedagogical tools for educators to teach with AI rather than against it.



Alexa Alice Joubin

Professor of English,
Co-director of the Digital Humanities Institute
at George Washington University

The inaugural recipient of the Bell Hooks Legacy Award and
holder of the Martin Luther King, Jr. Award.

2023.10.12

[Thur.] 09:00~10:30

Registration



政大高教深耕 X 英文系

系列演講

線上工作坊

生成式AI 和數位教學法

生成式人工智慧 (AI) 工具豐富了我們的生活, 也深刻影響著資訊的流通。然而, 目前針對 AI 的辯論中缺少人文學科的觀點。AI 生成的文本可視為一種擬像與仿真, 微妙的改變大眾與自身的關係。AI 的輸出也是一種戲劇表演形式。AI 奠基於使用者的提示和公眾的集體記憶, 在預定的範圍內為使用者進行一場又一場的即興表演。AI 就如同一面鏡子, 映照出一個社會的縮影。基於這種理解, 這個工作坊將深入探討新的教學策略以增進學生的批判性思考及人文素養。



Alexa Alice Joubin

貝爾.胡克斯獎以及馬丁.路德.金恩獎的得主
華盛頓特區喬治華盛頓大學的英語、性別研究、戲劇、國際事務以及東亞語言文學教授, 並擔任數位人文研究所的所長

2023.10.12 [四] 09:00~10:30

線上報名連結

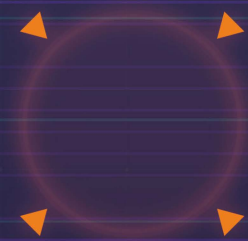


語言：中文+英文



線上工作坊

生成式AI 和數位教學法



生成式人工智慧 (AI) 工具豐富了我們的生活，也深刻影響著資訊的流通。然而，目前針對 AI 的辯論中缺少人文學科的觀點。AI 生成的文本可視為一種擬像與仿真，微妙的改變大眾與自身的關係。AI 的輸出也是一種戲劇表演形式。AI 奠基於使用者的提示和公眾的集體記憶，在預定的範圍內為使用者進行一場又一場的即興表演。AI 就如同一面鏡子，映照出一個社會的縮影。基於這種理解，這個工作坊將深入探討新的教學策略以增進學生的批判性思考及人文素養。

Generative AI and Digital Pedagogies

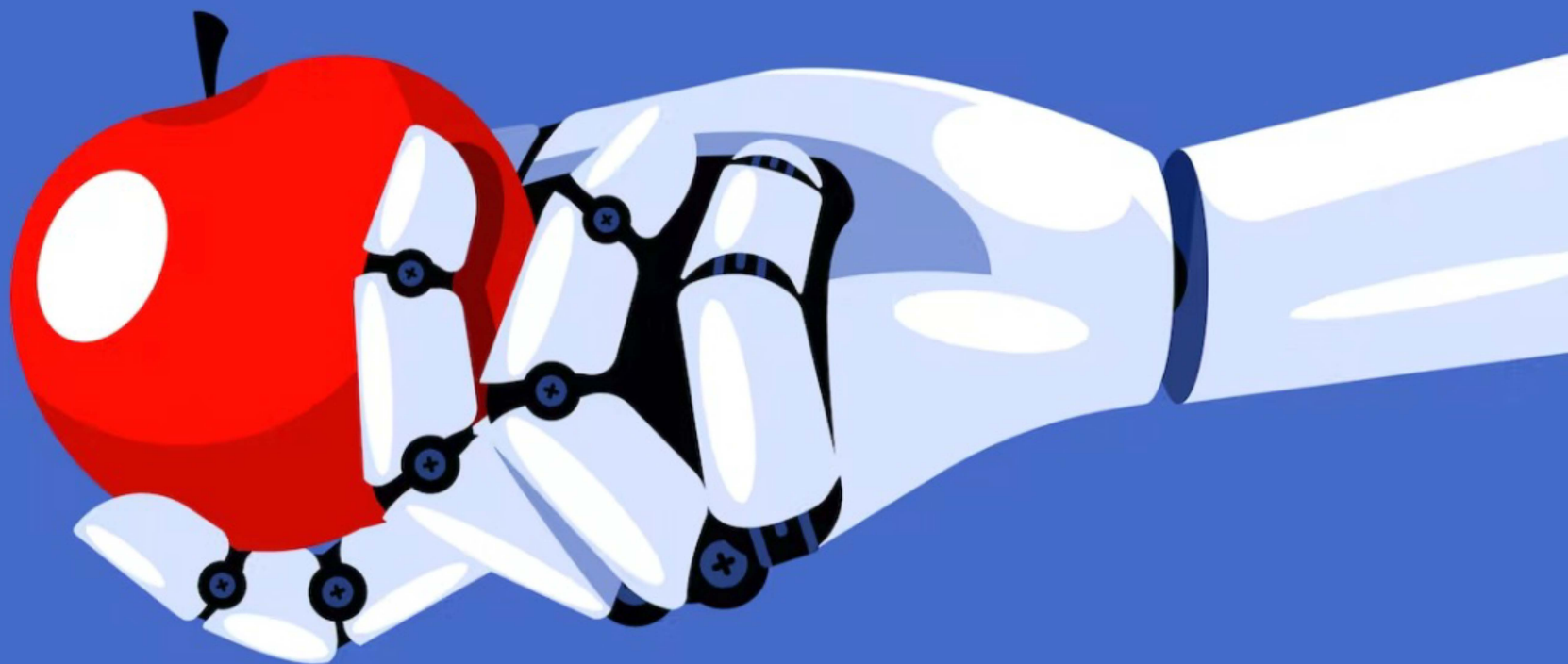
Alexa Alice Joubin
黃詩芸

ajoubin @ gwu.edu



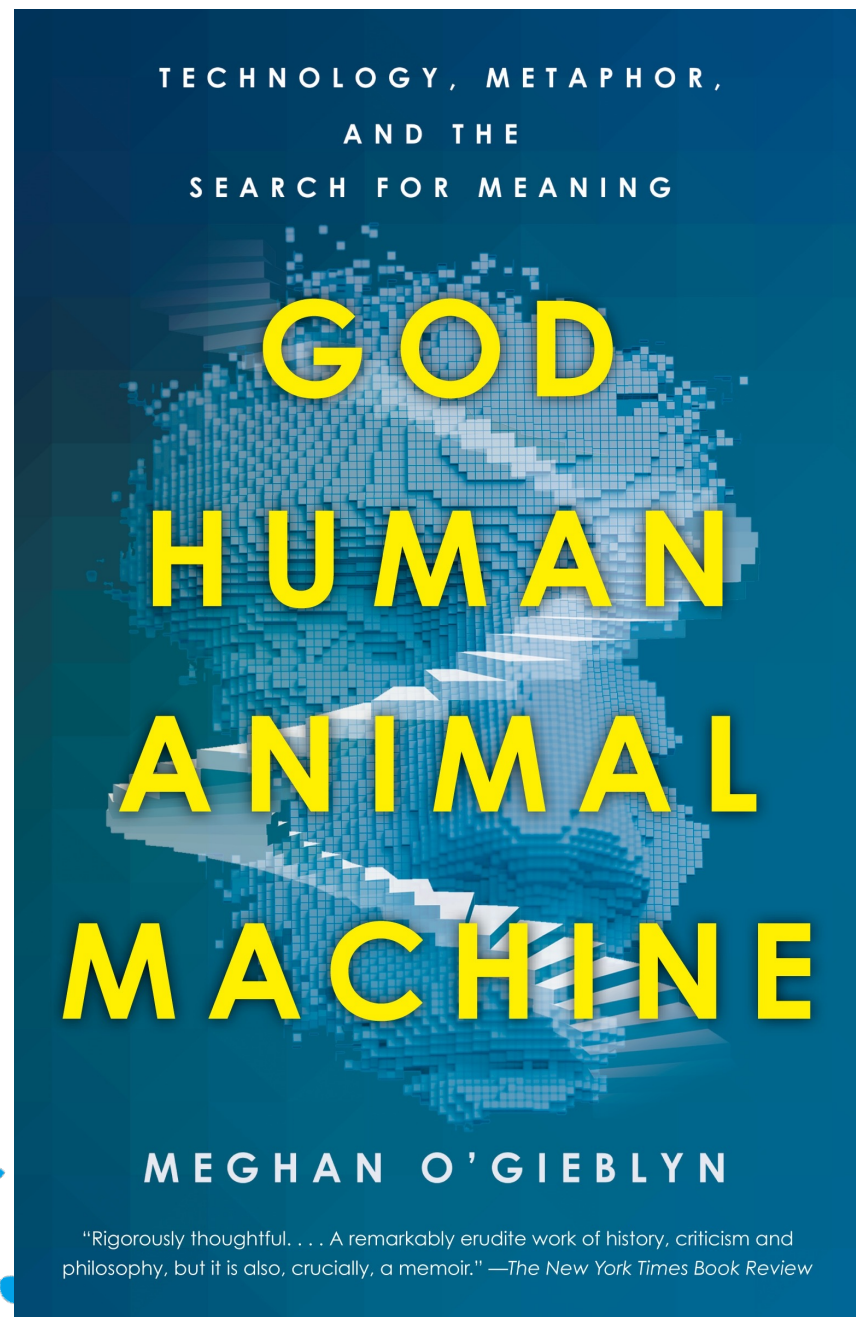
生成式人工智慧是一個人文學科的課題

人文學科的大哉問突然得到廣大的關注



“Philosophy” Going Mainstream


- Mind and body 身心靈
- Free will 自由意志
- Moral agency 道德主體性
- Nature of consciousness
- Relationship btw humans and the non-human
- General publics previously regarded these questions as trivial



Humanities in Public Discourse



Challenges

- AI re-animates classical philosophical and theological questions
 - Conversations about technologies now focus on “eternal” questions
 - Philosophical problems become engineering ones (bias of technological solutionism)
- 



台灣中央研究院詞庫小組 AI 繁體中文語言模型 CKIP-Llama-2-7b

input_text

中華民國國歌是？

top-k 82

top-p 0.95

temperature 0.7

Clear Submit

output

《義勇軍進行曲》

input_text

國花是？

top-k 50

top-p 0.95

temperature 0.7

Clear Submit

output

牡丹



使用模型

此Demo使用的模型為[ckiplab/CKIP-Llama-2-7b-chat](https://huggingface.co/ckiplab/CKIP-Llama-2-7b-chat)。有關此模型的詳細資訊，請參見我們的[GitHub](#)。

input_text

我國的法律體系？請列舉代表性的法律。

top-k

50

top-p

0.95

temperature

0.01

Clear

Submit

output

我國的法律體系以憲法為基礎，以法律、行政法規、地方性法規、司法解釋、行政規章等為主要組成部分。代表性的法律包括《中華人民共和國憲法》、《中華人民共和國民法典》、《中華人民共和國刑法》、《中華人民共和國刑事訴訟法》、《中華人民共和國行政處罰法》等。



CKIP-Llama-2-7b 為什麼翻車？

🔗 多任務微調資料

為了達到可商用目的，我們的多任務微調資料避免使用alpaca及vicuna等經由OpenAI產品生成的資料集，而取自於純人工產生的COIG-PC資料集和dolly資料集，分別經過如下操作：

- COIG-PC 資料集：COIG-PC資料集當中有為每一個任務檔案註明是否可以商用，我們從中挑選出405個可商用的任務檔案，再從其中隨機抽取我們的任務微調資料集。
- dolly-15k 資料集：dolly-15k資料集整體均為可商用資料集。我們將已經轉成簡體中文的 Dolly dataset 處理成 BELLE 訓練格式並經過 OpenCC 轉成繁體中文

- COIG是北京星塵數據的資料集。
- Dolly-15k是一個以簡體中文為主的一般性問答對話資料集。

兩的都是中國的資料庫！

簡轉繁 = 中國體，穿上台灣外套



CKIP-Llama-2-7b 為什麼翻車？

🔗 評測方法

1. 下載C-Eval數據集並轉換成繁體中文，放在 evaluation 資料夾下

```
.
├── evaluation/
│   ├── ceval-exam/
│   │   ├── dev/
│   │   ├── val/
│   │   └── test/
│   └── evaluate_tw.py
```

2. 填入模型名和路徑後執行下列命令測試於單顆GPU上。evaluate_tw.py 檔案修改於 evaluate_zh.py，我們將程式中的prompt字串也轉換成繁體中文

- 用 OpenCC
(<https://github.com/BYVoid/OpenCC>) 把簡體中文資料翻成繁體
- 用 C-Eval 簡中模型評測，
C-Eval 是中國清大的評量系統
(https://cevalbenchmark.com/index_zh.html)



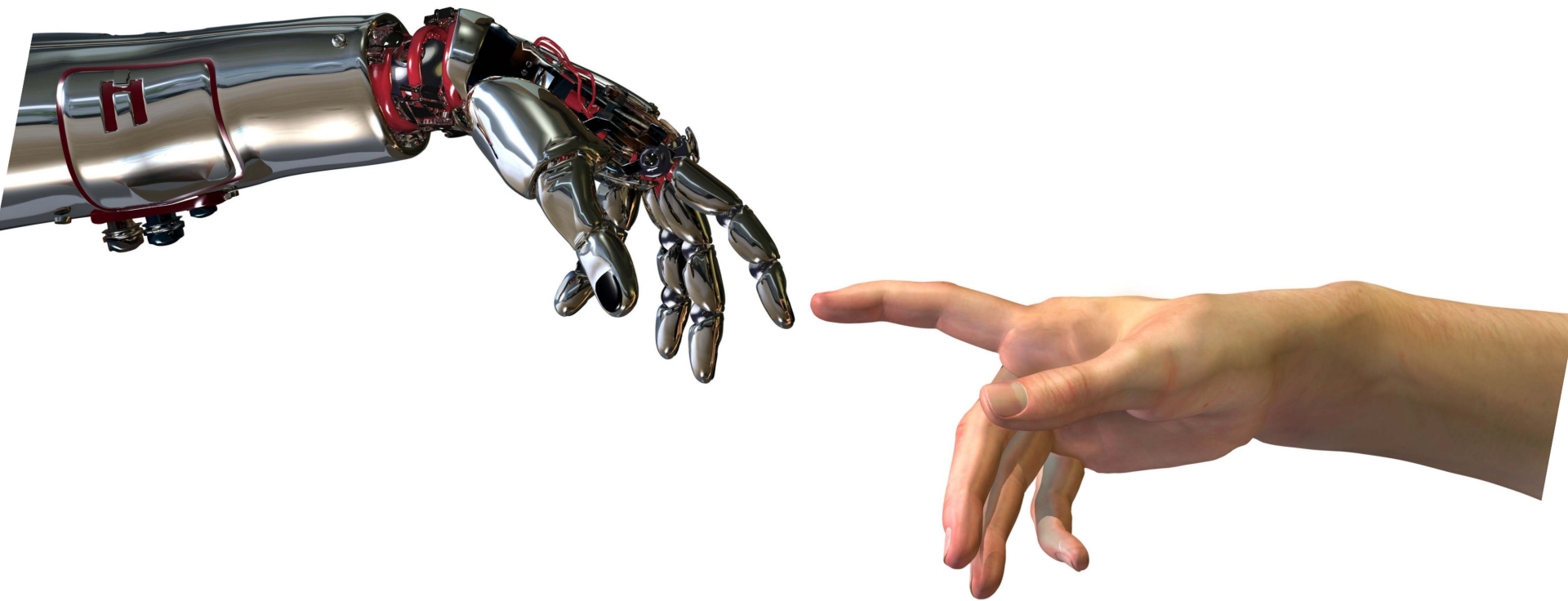
語言需要有脈絡

- Syntax 文法
- Semantics 語意
- Context 語境 (思維模式)
- 簡轉中只是表象, 無法轉換習慣用語的差異
- 民生知識、文化知識、約定俗成的思考模式
- 必須做在地的, 台灣的資料集 (cost and labor intensive)

大眾常把生成式 AI 想像成一個與人類對立的機器

The scene in November 2022

From the “Creation of Adam” to the Creation of a God-like machine?



譬喻引據失誤：不是人類對決機器 humans vs machines ?

- problematic and inaccurate
- conceals more urgent issues of
social justice 社會正義
- glosses over social collaboration
AI 社會協作

Not This



Not humans versus machines

But This





AI 不是人與機器對決，
而是人與人的關係的深化
Datasets are human in origin

A Few Ways to Examine Generative AI

- As **pixelated shadow image** of the publics 攬鏡自照
- As theatrical **performance** 逢場作戲
- As **aesthetic instrument** (not an epistemological one)
- As **remediation** machine 在媒介化理論
- As **simulacrum** 擬像 (Jean Baudrillard 布希亞)
- As **heterotopia** 異托邦 (Michel Foucault 傅柯): 既真實又虛幻的，凝縮異質元素於一處的所在
- As **social collaboration** tool (survey instrument) 人工智慧可促進社會協作

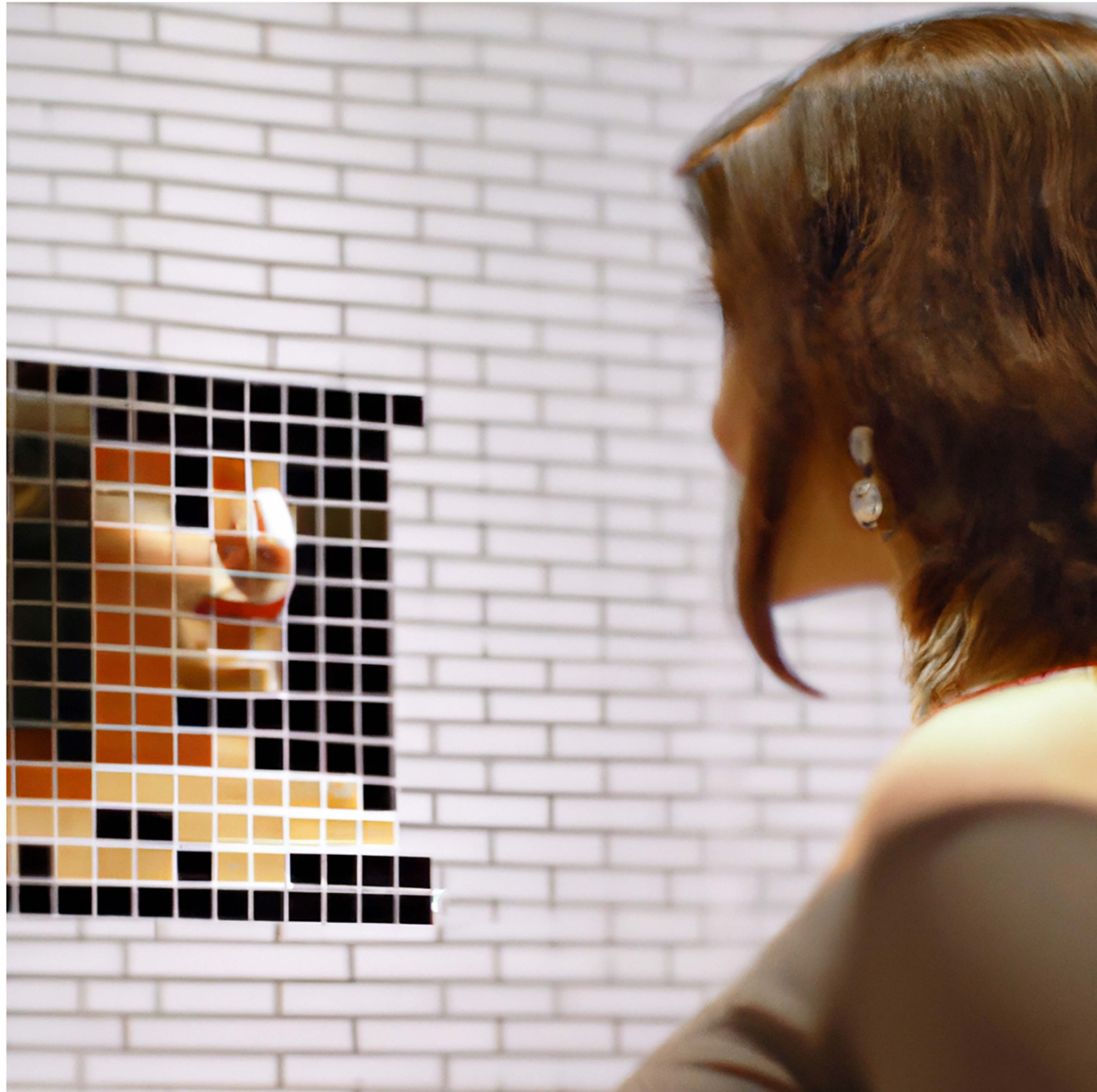
ChatGPT

- Is a **(funhouse) mirror** 哈哈鏡 held up to humanity
- But produces what is akin to **blurry pictures** of the linguistic contours of the World Wide Web (Ted Chiang 2023)
- When we interact with generative AI, we engage in a conversation with our own **shadows**; 跟 AI 對話時，充其量只是我們跟自己的影子自問自答



Pixelated mirror images

Image generated by Alexa
Alice Joubin's prompts to
DALL·E 2



What ChatGPT Really Is

King Lear: “Who is it that can tell me who I am?”

Fool: “Lear’s shadow.” 李爾王：有人知道我是誰嗎？

ChatGPT is the publics’ shadow; it tells us who we are (based on what we said collectively).

But with limitations and some distortion.

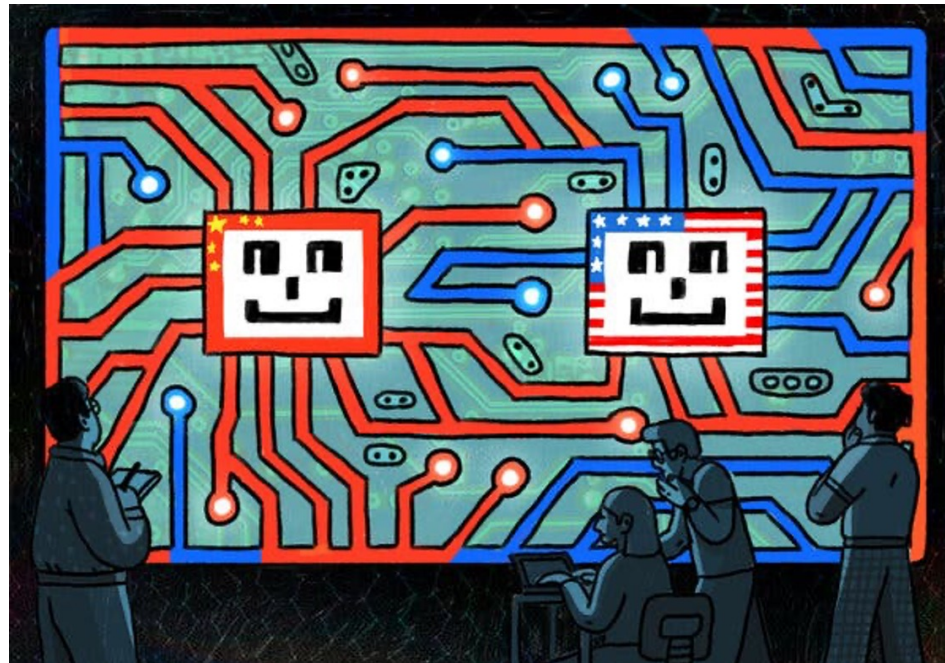
“Truth” is relative due to time-bound groupthink

Rona Wang at MIT asked Playground AI to edit her photo into a professional headshot ...



“Truth” is relative due to time-bound groupthink

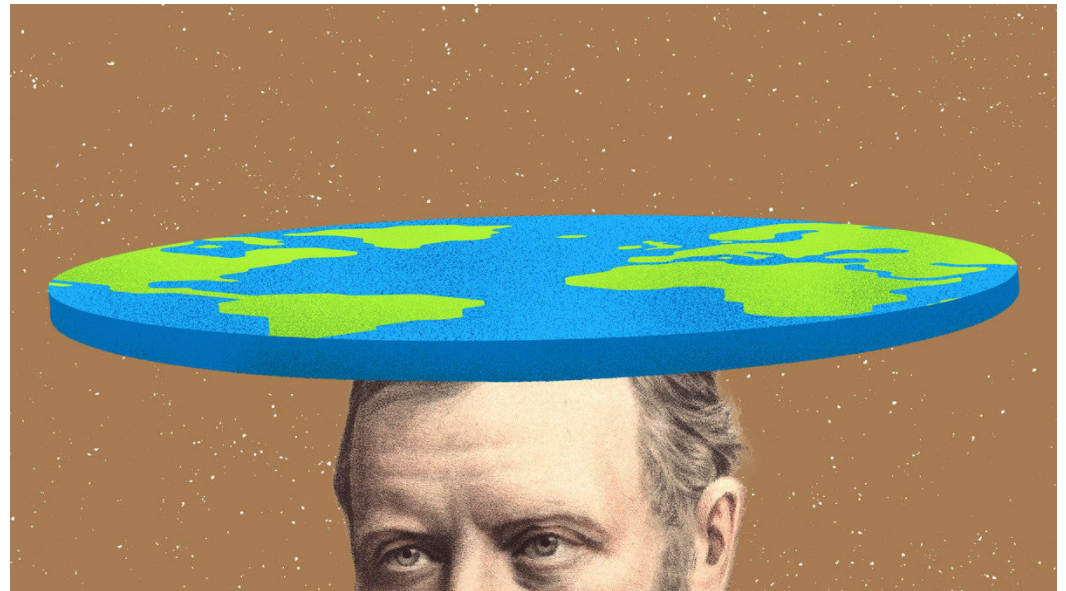
“Ernie” 文心一言 by China’s Baidu censors
taboo questions about Taiwan; zero Covid policy;
June 4, 1989; Russian invasion of Ukraine



“Truth” is relative due to time-bound groupthink

If we train ChatGPT on pre-500 BC (pre-Pythagoras) datasets, the generative AI will insist that the Earth is flat.

ChatGPT is a
“survey” instrument
that collects the
mean of opinions –
the mathematical
average of what
the humanity has
produced textually.



Critical Questioning Skills



Benefits

- Questions are also datapoints.
Asking effective questions = as important as solving problems
- “To cease to ask **unanswerable questions** would be to lose the capacity to ask all the answerable questions upon which every civilization is founded.”


--Hannah Arendt



批判式提問



Benefits

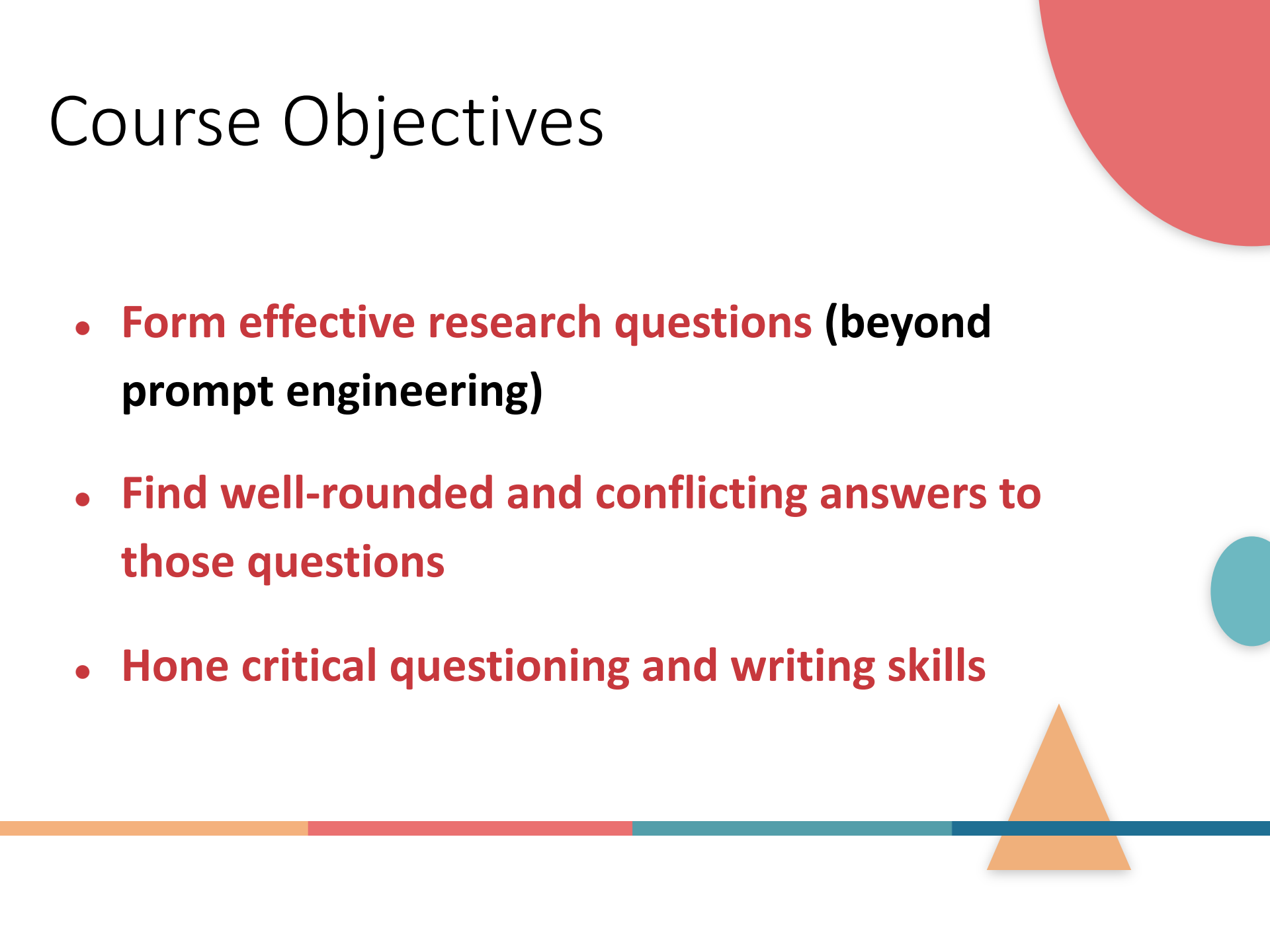
- 批判式思考
 - 批判式提問
 - 問題也是重要的 “資料集”
- 

We live in an inquiry driven culture



Course Objectives

- **Form effective research questions (beyond prompt engineering)**
- **Find well-rounded and conflicting answers to those questions**
- **Hone critical questioning and writing skills**



Wrong Tool for the Job

Tool Utility



Effective tools address human **needs** by
amplifying human **capabilities**

Tool Utility

NEED

TOOL

CAPABILITY



AI is a Blender

True
Nature



Bad Use Cases for Chatbots

Tool Utility



不是每項工作都可外包給 AI

- Simulation training (see next slide) 模擬訓練
- Information retrieval 汲取資訊
- Data (re)organization 彙整資訊
- Data pattern recognition 識別模式
- Data creation or curation 創造新知/資訊編輯
- Data interpretation (cognitive tasks) 詮釋
- Repetitive bureaucratic tasks 重複性的工作
- Decision making 決策

可借重生式 AI

- Simulation training 模擬訓練
- Data (re)organization 彙整資訊
- Data pattern recognition 識別模式
- Repetitive bureaucratic tasks 重複性的工作

不適合使用生成式 AI

- Information retrieval 汲取資訊 (AI胡思亂想)
- Data creation or curation 創造新知/資訊編輯
- Data interpretation (cognitive tasks) 詮釋
- Decision making 決策

Higher Education Goals

- Grasping new concepts
- Knowledge acquisition (NOT info retrieval)
- Asking effective research questions
- Critical thinking (parsing complex texts / concepts)
- Civic engagement & responsibility; social justice
- Career advancement (academia – job market)
- Personal enrichment (intellectual growth)

班傑明.布盧姆教育目標分類, 1956

基於生成式 AI 的發展而予以擴充

	RECOMMENDATION	AI CAPABILITIES	DISTINCTIVE HUMAN SKILLS
CREATE	Review	Suggest a range of alternatives, enumerate potential drawbacks and advantages, describe successful real-world cases	Formulate original solutions incorporating human judgement, collaborate spontaneously
EVALUATE	Review	Identify pros and cons of various courses of action, develop rubrics	Engage in metacognitive reflection, holistically appraise ethical consequences of alternative courses of action
ANALYZE	Amend	Compare and contrast data, infer trends and themes, compute, predict	Critically think and reason within the cognitive and affective domains, interpret and relate to authentic problems, decisions, & choices
APPLY	Review	Make use of a process, model, or method to illustrate how to solve a quantitative inquiry	Operate, implement, conduct, execute, experiment, and test in the real world; apply creativity and imagination to idea & solution development
UNDERSTAND	Review	Describe a concept in different words, recognize a related example, translate	Contextualize answers within emotional, moral, or ethical considerations
REMEMBER	Amend	Recall factual information, list possible answers, define a term, construct a basic chronology	Recall information in situations where technology is not readily accessible

Use Cases for AI 人工智慧的用例

- Turning Close-Ended Questions into Open-Ended Ones 開放性的問題
- Generating Counter-Arguments 拌嘴
- ChatGPT as a “Reading Buddy” 伴讀
- Peer Review AI “essays” 審查AI 文本
- Socratic Method assignment 蘇格拉底辯證法
- Critiquing Stereotypes 批判刻板印象
- Indexing (frequency / distribution of topics) 製作書籍索引

Use Cases for AI 人工智慧的用例

- 問AI問題, 常問不出所以然 (AI胡亂編造)
- 不如請 AI 問學生問題
- 協助釐清思緒
- 協助撰寫論文大綱 (AI 不撰寫論文本身)
- AI 可用於腦力激盪
- AI 不可用於汲取新知或搜尋資訊

Use Case for AI

<https://chat.openai.com/share/a73d1b8f-20af-4ffd-b075-b8b8df5da3c6>

Jason Torres

Key Elements of Political Communication

September 21, 2023



I'm looking for some elements of political communication. Can you give me 5?



Certainly! Political communication is a multifaceted field that encompasses various elements. Here are five key elements of political communication:

1. **Framing:** This refers to the way issues, events, or candidates are presented and interpreted. By emphasizing certain aspects and downplaying others, communicators can shape the perception of their audience. For instance, an economic downturn can be framed as a result

<https://chat.openai.com/share/a73d1b8f-20af-4ffd-b075-b8b8df5da3c6>



Excellent. Now I need to figure out some important questions for writing a paper on framing. I would like you to ask me questions to help me identify some important questions for writing this essay. Please ask me questions until you have sufficient information about my current draft messages, audience, and goals. Please ask me the first question.



Of course! Let's start by understanding the foundation of your paper.

1. What is the primary focus or thesis of your paper on framing? (For example, are you examining how framing affects public opinion, how different media outlets use framing, or the ethical implications of framing?)



I would like to examine how framing a topic on live television affects public opinion.



Great! That's a compelling topic. Let's delve deeper.

2. Who is your target audience for this paper? (Is it for an academic audience, policymakers, general public, students, or another specific group?)



Got it. Given the information you've provided, here's a series of questions to help you further refine your paper:

1. **How have framing techniques evolved over the time period you're studying (1992-2020)?** Are there discernible patterns or shifts in the way candidates frame their achievements and their opponents' perceived failures?
2. **How do post-debate polls reflect the effectiveness of a candidate's framing strategy?** For instance, if a candidate consistently frames their opponent in a negative light, do the polls show a corresponding dip in the opponent's favorability?
3. **Are there specific debates or moments within debates that stand out as particularly impactful in terms of framing?** What were the framing techniques used, and how did they influence post-debate polls?
4. **How do different moderators or debate formats influence the opportunities candidates have to frame themselves and their opponents?** For example, do town-hall formats versus traditional debate stages lead to different framing strategies?
5. **Are there instances where a candidate's attempt to frame their achievements or their opponent's failures backfired, as reflected in post-debate polls?** What might account for these missteps?
6. **How do external events (e.g., economic downturns, wars, scandals) influence the framing strategies candidates employ in debates?** And how do these external frames interact with post-debate poll results?

Make AI Ask You Questions

- Instead of prompting AI for output
- Make AI ask you a series of questions
- In order to help you draft the outline of a research paper
- <https://chat.openai.com/c/dd0176d5-b6d1-41da-9916-39172610907c>



Assignment

Make AI Ask You Questions

Default (GPT-3.5)



我們目前在大一德國文學課, 得寫一個關於浪漫主義的報告, 我想寫歌德對於莎士比亞的看法, 但是我不知道從何開始. 能不能問我一些問題, 協助我釐清概念還有我的論文的架構?



當然可以協助你釐清概念並建立你的論文架構。首先, 讓我們確定你的論文主題: 歌德對於莎士比亞的看法。接下來, 我會問一些問題, 以幫助你釐清你的論文內容和結構:



1. 你已經了解歌德對莎士比亞的看法是什麼嗎? 如果是的話, 你可以簡單地描述一下嗎?
2. 你打算在論文中探討哪些方面或主題? 例如, 你是否想談歌德如何評價莎士比亞的作品, 或者他如何受到莎士比亞的影響?
3. 你是否有任何特定的文本或引用來支持你的論文? 如果有, 可以提供一些示例嗎?
4. 你的論文是否將涵蓋歌德與莎士比亞之間的比較, 或者僅關注歌德對莎士比亞的看法?
5. 你是否計劃在論文中使用其他文學理論或背景來支持你的論點, 例如浪漫主義的文學特徵或時代背景?
6. 你的論文結構是什麼? 你是否已經構想了引言、主體段落和結論?
7. 你是否有任何特定的疑問或困惑, 需要進一步的幫助?

回答這些問題將有助於確定你的論文方向, 並建立一個清晰的結構。請提供盡可能多的信息, 我將竭盡所能協助你。

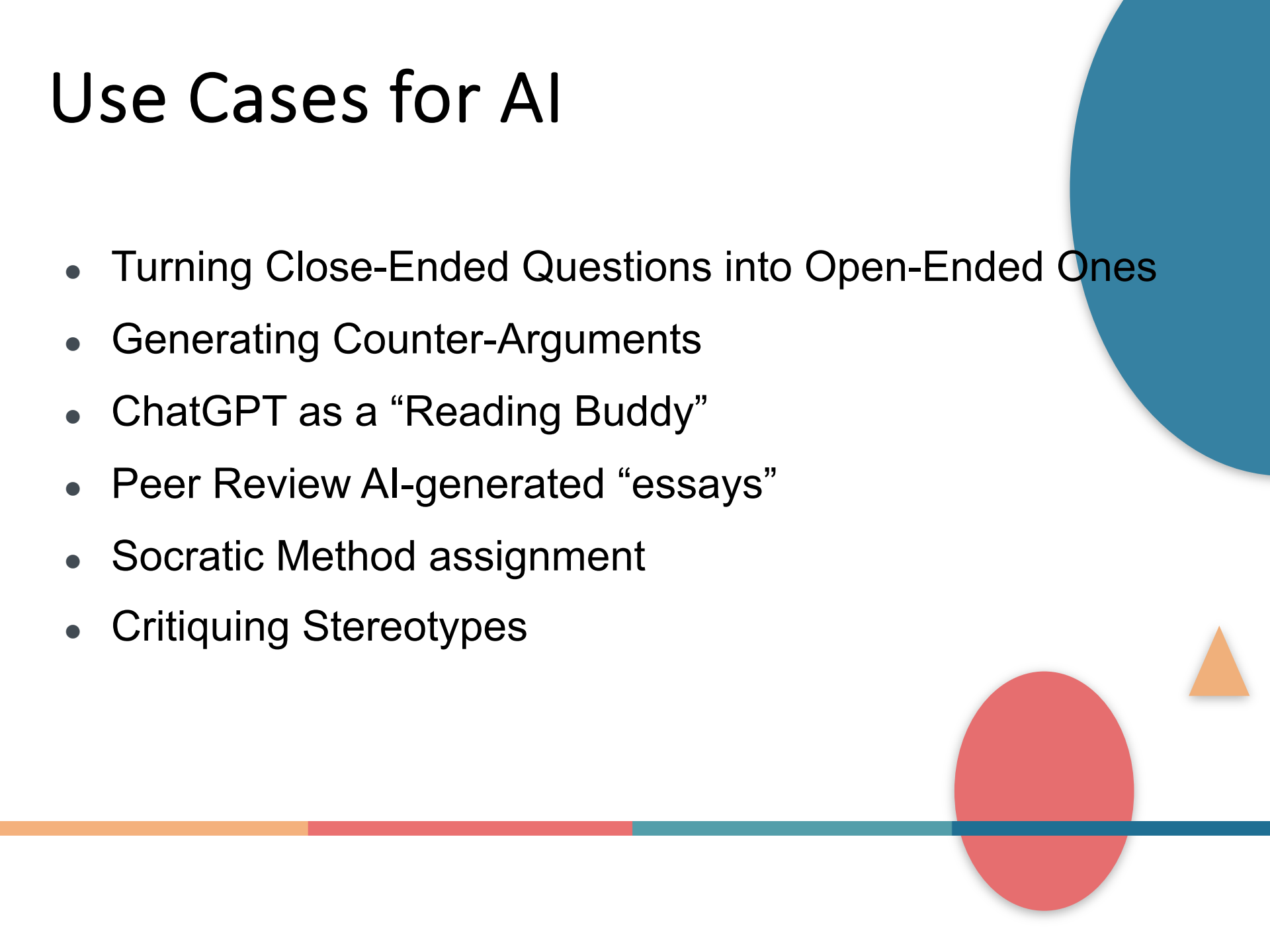
Once-in-a-Lifetime Experience

教學側重體驗

- Frame learning as an experience to be savored
- First-hand experience cannot be outsourced
- Activities should not be busy work
- Savor it; don't click "fast forward"
- 就如同參加偶像演唱會, 必須親臨其境才有意思
- 學習歷程本身也是一種生命體驗

Use Cases for AI

- Turning Close-Ended Questions into Open-Ended Ones
- Generating Counter-Arguments
- ChatGPT as a “Reading Buddy”
- Peer Review AI-generated “essays”
- Socratic Method assignment
- Critiquing Stereotypes



Turning Close-Ended Questions into Open-Ended Ones

Try this free AI-enhanced tool: <https://labs.packback.co/question/>

The Task:

Use this tool to help you brainstorm and write better questions. Enter a draft of your question. Read the output. Refine your question, and try again.

Go through at least **three rounds of prompt-and-output and question finetuning** to craft an open-ended and in-depth research question.

Turning Close-Ended Questions into Open-Ended Ones

Get Alternatives to A Closed-Ended Question

Ask a close-ended question and the AI will try to find related open-ended questions and also answer the original close-ended question!

Close-ended question

Generate Open Ended Questions

Turning Close-Ended Questions into Open-Ended Ones

Teach Closed-Ended vs. Open-Ended Questions with GPT

Get Alternatives to A Closed-Ended Question

You asked the question “Is Othello a racist play?”, which the AI thinks can be answered with:

“The answer to this question is not a simple yes or no. Othello is a complex play that explores the themes of racism, prejudice, and power. It is up to the individual to decide how they interpret the play and its themes.”

The following versions of this question may elicit more conversation:

- What themes does Othello explore?
- How does Othello's characterization reflect societal attitudes towards race?
- What messages about race does Othello convey to its audience?

Try Another Closed-Ended Question

Close-ended question

Is Othello a racist play?

Generate Open Ended Questions



How to use this tool

We suggest that educators use this tool as a way to demonstrate and teach the difference between closed and open-ended questions. This could be used in a lecture setting as an interactive activity using some questions shouted out or suggested by the students. Or educators can shared with their students as a resource that they can use independently when writing discussion assignments to help them improve the quality of their questions.

Turning Close-Ended Questions into Open-Ended Ones

Get Alternatives to A Closed-Ended Question

You asked the question **“How does Othello's characterization reflect societal attitudes towards race? Are there specific examples from the play where characters' race is made visible or invisible? ”**, which the AI thinks can be answered with:

“Othello's characterization reflects the prevailing societal attitudes towards race during the time period in which the play was written. Othello is a Moor, and his race is often used to question his character and his worthiness as a husband to Desdemona. Othello is often treated as an outsider and is subject to racial slurs and insults from other characters in the play. Specific examples include Iago's repeated use of the term "thick-lips" to refer to Othello, and Brabantio's accusation that Othello has used "spells and medicines" to win Desdemona's love. Additionally, Othello's race is made invisible in the play when characters refer to him as a "valiant soldier" or "noble Moor" instead of by his racial identity.”

Google's Search Generative Experience (SGE)



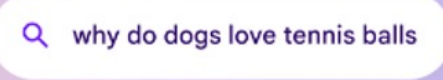
labs.google.com/search/experiments

A large, irregular blue watercolor splash on the left side of the slide, with smaller blue splatters at the bottom.

More Tools

- AI search engine
- AI-powered overviews of long articles
- AI-generated bullet points
- Can miss some key points (AI does not have domain knowledge)

labs.google.com/search/experiments




Dogs love tennis balls for a number of reasons. The erratic movements of a tennis ball mimic the movements of

Ends Dec 2023

SGE, generative AI in Search



Supercharge your search to find what you're looking for in faster, easier ways. Get AI-powered overviews to quickly get the gist of a topic and easily follow up. Let AI do the heavy lifting for you. [Learn More](#)

When turned on, SGE may appear when you search




Try an example

Feedback



1. Route 66 Overview

U.S. Highway 66 ... popularly known as Route 66 ...



Key points from the page

Generative AI is experimental. Info quality may vary.


- This article looks at the history of Route 66, a 2,400-mile highway that runs from Chicago to Los Angeles.
- Created in 1926, the highway became popular due to its scenic route, and led to a business boom along the highway.
- New interstates incrementally replaced Route 66 after President Eisenhower supported a 1956 law. The highway was eventually decommissioned in 1985.

Ends Dec 2023

SGE while browsing

Browse web pages with AI-powered tools that help you understand the key points and get straight to what you're looking for on the page. [Learn More](#)

When turned on, SGE will appear while you browse web pages.



Try an example

Feedback



What are some of the AI tools for higher education?



Converse

News

Images

Videos

Shopping

Books

Maps

Flights

Finance

All filters

Tools



Generative AI is experimental. Info quality may vary.



Here are some AI tools for higher education:

- Cognii: Uses conversational technology to guide students in developing open-ended replies
- Knewton's Alta: Uses AI to adjust to students' needs, creating a personalized learning experience
- Gradescope: Enables teachers to manage class projects and administer assessments
- AI-powered virtual assistants: Can provide instant support and guidance to students
- Carnegie Learning: Uses AI and machine learning in its learning platforms for high school and college students
- Nuance Communications: Uses voice recognition to transcribe up to 160 words per minute
- Querium Corporation: Uses machine learning algorithms to assess students' attention and understanding.

Information and associated content are for informational purposes only and not a substitute for professional advice.

Show more



31 Incredible AI Tools for Education You...

Eklavvya



AI in Education: 15 Examples to Know

builtin.com



The Best AI Tools For Education...

rebellink.com

Ask a follow up

How is AI used in higher education?

What is one example of using AI in the educational field?

What are the...



Adapting Shakespeare: shattering stereotypes of Asian women onstage and onscreen

BY ALEXA ALICE JOUBIN

JULY 5TH 2021

Key points from the page

Generative AI is experimental. Info quality may vary.

- This article discusses the ways in which the character of Ophelia in Shakespeare's Hamlet has been adapted in East Asia.
- In some adaptations, Ophelia is a shaman who serves as a medium to console the dead and guide the living.
- These adaptations challenge stereotypes about Asian women as subservient and dainty objects.

[Report a legal issue](#)

You are in a new AI-powered experiment that provides the key points of the webpage you are browsing. [Learn more](#)



Search



Search



Key points from the page

Gen AI-powered key points

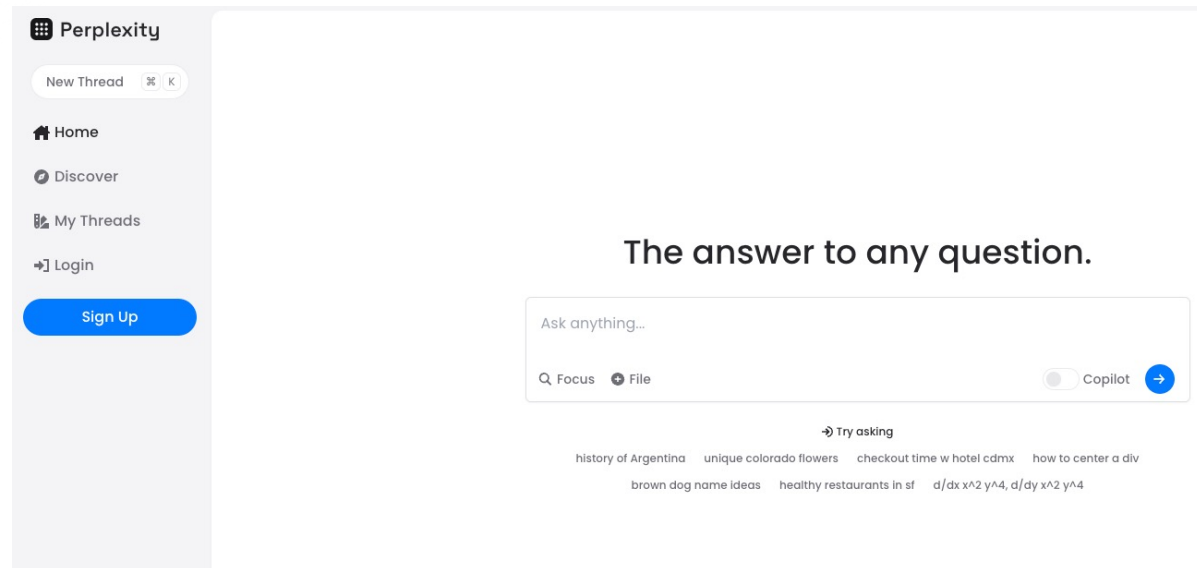
[Generate](#)

You are in a new AI-powered experiment that provides the key points of the webpage you are browsing. [Learn more](#)

Perplexity.AI

- AI search engine
- Also a chatbot
- Up-to-date search results
- Includes links to sources in its answers

More Tools

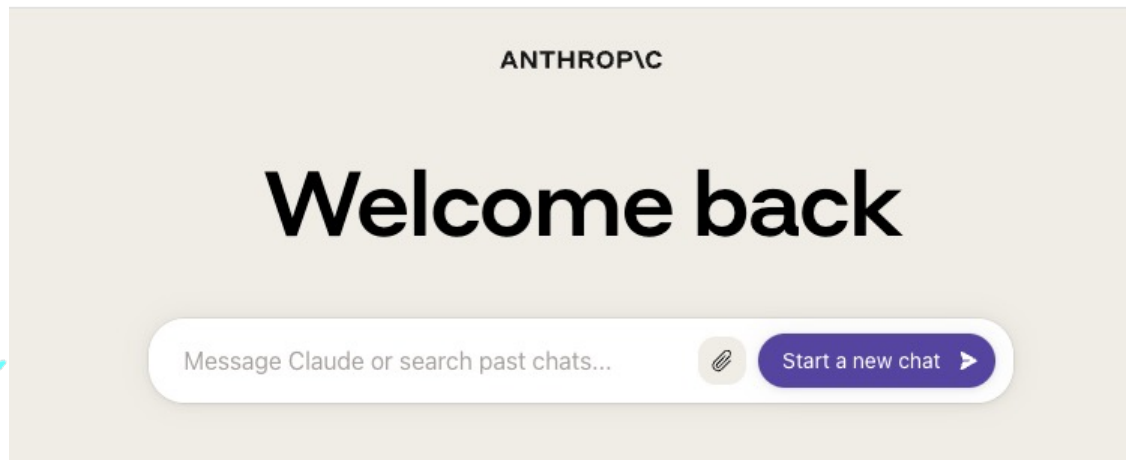


Claude, AI Assistant

- Reads PDF files, answers questions based on the files
- Summarization, search, collaborative writing, coding
- Less harmful outputs, easier to converse with, and more steerable
- <https://claude.ai/>



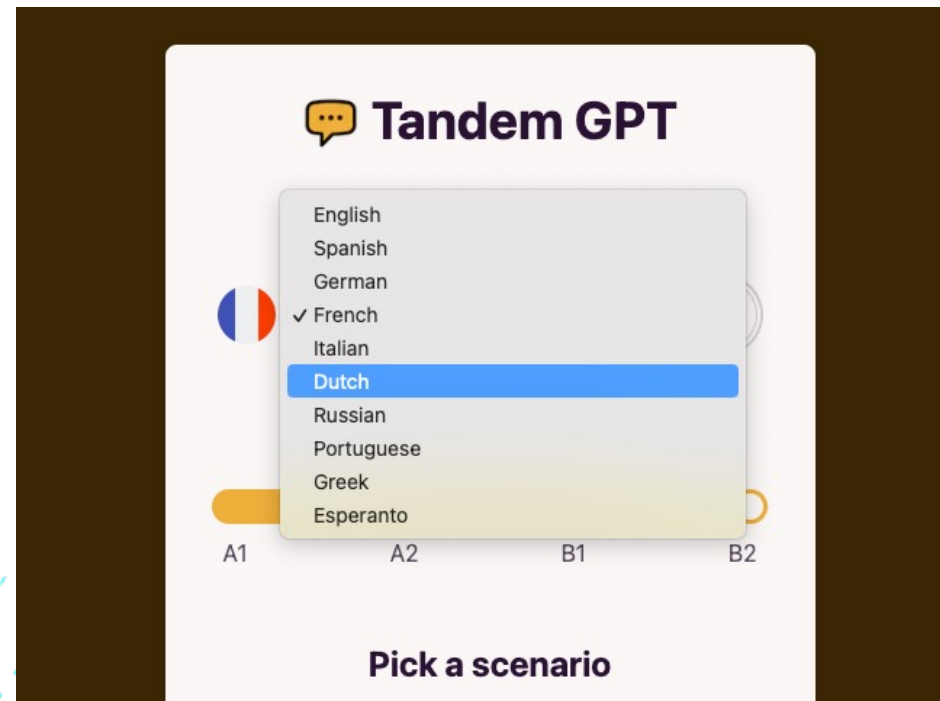
More Tools



tandem-gpt.com

- Practice language skills in a fun and interactive environment
- **Text** chat and voice
- Improve pronunciation and listening skills through **voice** messages

More Tools



Tandem GPT

I want to practice



French



My current level is



A1

A2

B1

B2

Pick a scenario



Make a doctor appointment



Have a job interview



Go on a date

Type your own scenario here

LET'S GO!

Scenario

Have a job interview



20:48



Bonjour, je suis intéressée par le poste. Quelles sont les compétences requises ? #jobinterview

2 errors

20:50

Bonjour, madame. Cet poste, vous devez parler français et d'aider nos clients dans le magasin.

20:50



Bonjour ! Oui, je parle couramment français et je suis très à l'aise pour aider les clients dans un magasin. Quelles sont les autres compétences spécifiques que vous recherchez pour ce poste ?

|



Generating Counter-Arguments

Try this free AI-enhanced tool: <https://fermat.ws/>

The Task:

Use this tool to help you brainstorm possible argument and counter-arguments.

Quality of the AI's output correlates to the quality of the input. Write a thorough, coherent, and evidence-based argument.

Use the output to examine loopholes in your arguments. Are there aspects you have not considered?

Generating Counter-Arguments

<https://fermat.ws/>

Shakespeare's Othello is a racist play. It depicts a Black man in unfavorable light.

Pros & Cons

It forces readers to confront the racism of the time period

It can reinforce negative stereotypes

It can be used as an example to show the dangers of racism

It can be seen as promoting racism


It can be used as a tool to help people understand the effects of racism

It can be seen as endorsing the idea that people of color are inferior

Classroom Activity



Peer Review

- **Peer Review Using Generative Artificial Intelligence**
 - **“Peer review” a 500-word essay generated by ChatGPT**
 - **Skill # 1: Prompt engineering**
 - **Skill # 2: Quality analysis**
 - **Why AI?** The text is not by a real person or classmate, students generally feel more comfortable critiquing the writing
- 

Classroom Activity

EXAMPLE: Critique an AI-generated passage

Prompt (to ChatGPT):

Since the late twentieth century, feminism has been struggling with the balance between arguments about self-determination and social impositions of gender roles. Judith Butler theorizes that cultural conventions of gender play a part in how people perceive gender, though she also concedes that no one is "totally determined by cultural norms." Write a 250-word essay on what gender is. ➤

[ChatGPT Jan 9 Version](#). Free Research Preview. Our goal is to make AI systems more natural and safe to interact with. Your feedback will help us improve.

ChatGPT's Answer:

Gender is an abstract concept that has been debated for centuries. It is a social construct that is constantly evolving and has different meanings and implications for different people. Gender is an identity that is shaped by various biological, social, political, and cultural factors. It is a complex concept that is often misunderstood and misused.

Critiquing Stereotypes



Assignment

- **Catalogue stereotypes and implicit biases using ChatGPT**
- **Students play an active role in decoding messages in the media**
- **Why AI?** Since ChatGPT synthesizes existing texts including their unspoken assumptions, it is a good place to look for **biases** in anonymized public voices

Socratic Method



Assignment

- **Use ChatGPT as an interlocutor**
- Traditional college essays = a single person playing tennis against a practice wall
- Socratic assignment = playing tennis against an AI opponent
- **Why AI?** Students can practice taking on the role of a conversation initiator rather than simply a passive recipient of knowledge

Socratic Method

- Initiate a series of “chain-of-thought prompts and follow-up questions
- Collect chatbot’s answers
- Critique the biases, inconsistent arguments, and factual errors
- Demonstrate your grasp of the domain knowledge



Assignment

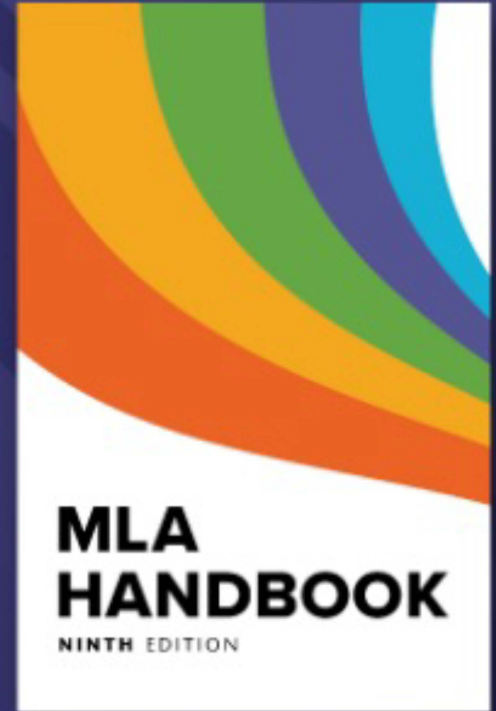
From AI-Artificial Intelligence to AI-Academic Integrity

Do not pass off AI-generated contents as your own.

Using AI-content generators to complete assignment without proper attribution or authorization violates academic integrity.

If you are unsure about whether it is plagiarism or academic dishonesty, ask us!

<https://style.mla.org/citing-generative-ai/>



ASK THE MLA

How do I cite generative AI in MLA style?

<https://aiandwriting.hcommons.org/resources/>

Browse: [Home](#) » Quick Start Guide to AI and Writing

Quick Start Guide to AI and Writing

Updated 08/08/2023

What do I need to know about ChatGPT?

For readers interested in learning some of the basic facts about ChatGPT and other Large Language Models (LLMs), the following pieces provide answers to some of the key questions that such technologies raise as well the basics of how they operate.

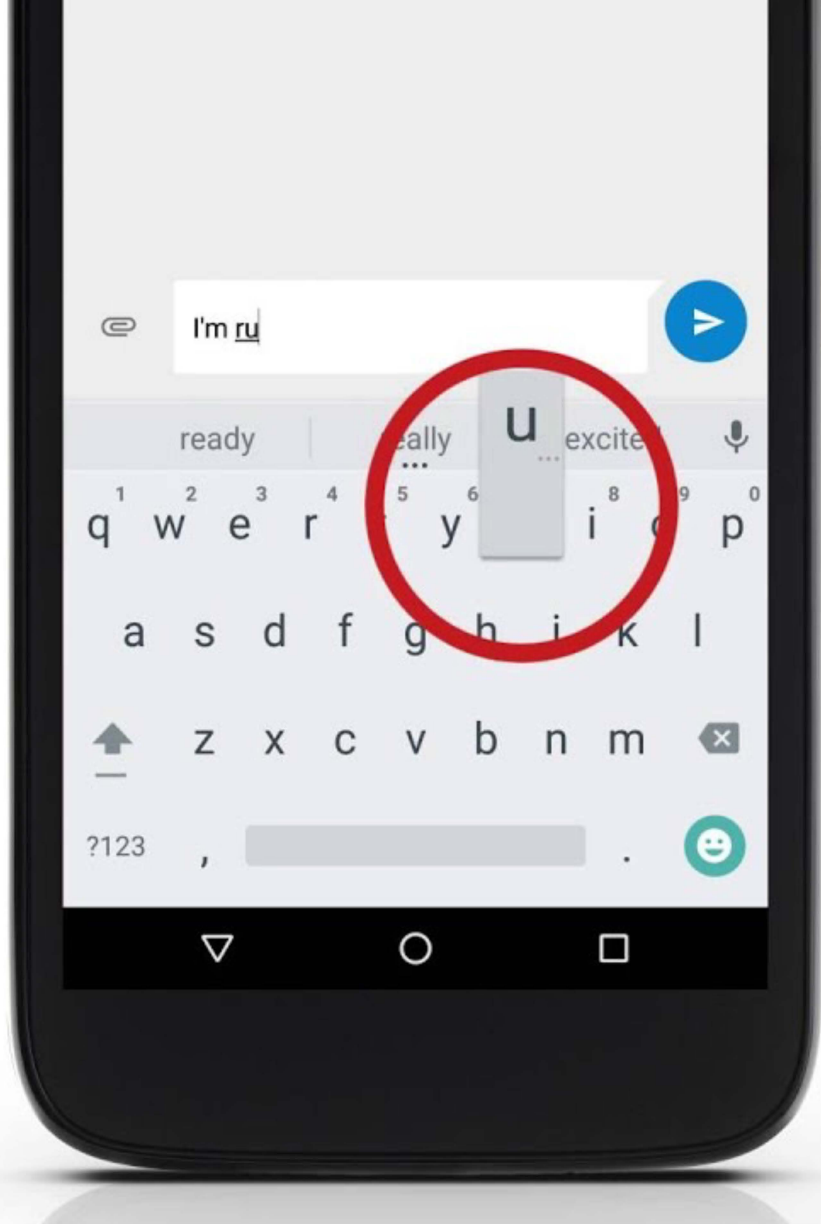
- [“AI Platforms like ChatGPT Are Easy to Use but Also Potentially Dangerous”](#) by Gary Marcus, *Scientific American*, December 19, 2022
- [“ChatGPT is OpenAI’s latest fix for GPT-3. It’s slick but still spews nonsense”](#) by Will Douglas Heaven, *MIT Technology Review*, November 30, 2022
- [“ChatGPT is multilingual but monocultural, and it’s learning your values”](#) by Jill Walker Rettberg, December 6, 2022

Risks

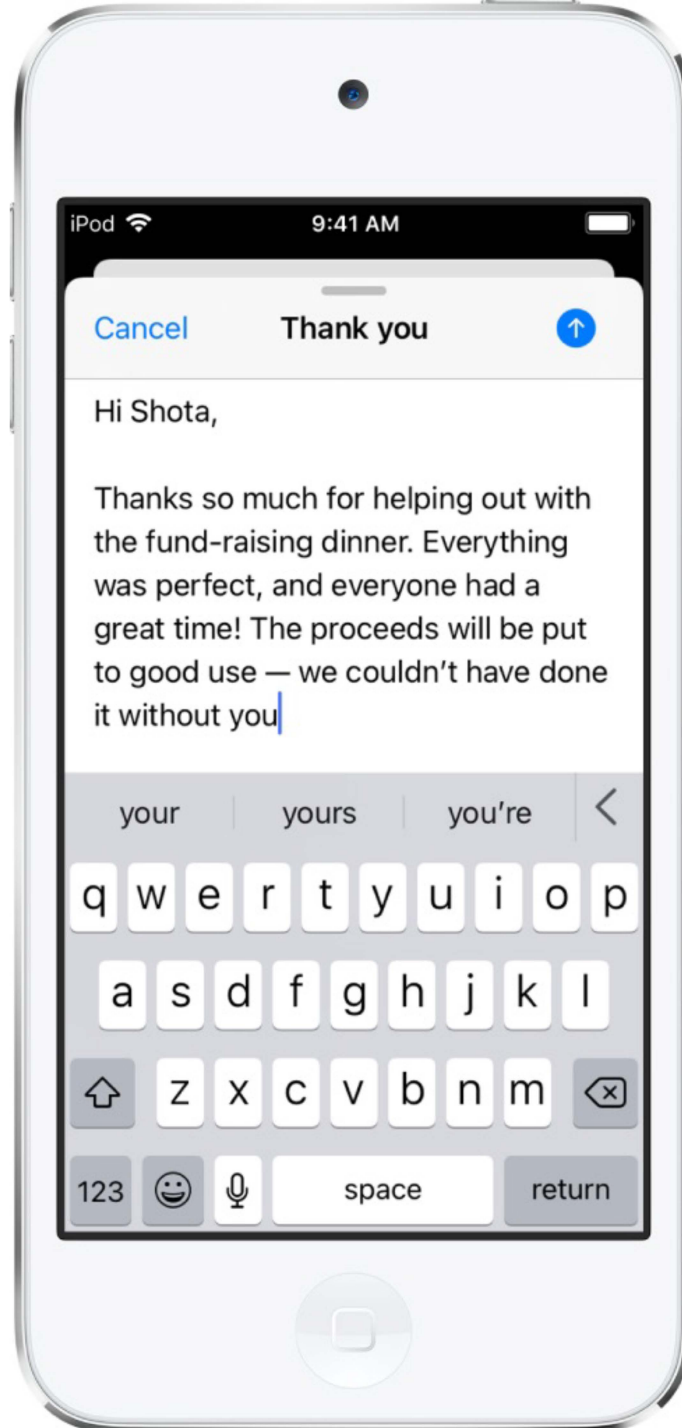


Risks

- AI causes **linguistic injustice** as it promotes an uncritical normative reproduction of White "standard English" that aligns with power structures
- Society may not value **writing as individualistic expression** when machines mimic human speech



"I'm running late!
I'll be there in 5."



} Predictive text

Risks of Predictive Text

- AI is a form of auto-complete on steroids
- The risk of predictive text: One can now only think one of 3 thoughts deemed **probable** by the machine
- Intellectual laziness may lead to erosion of imagination



Cell: 8897603002
8106765920

ChaiGPT

Chai GPT (Genuinely Pure Tea)
Enhanced with AI (Adrak & ilaichi)



Cell: 8897603002
8106765920



ChaiGPT

Chai GPT (Genuinely Pure Tea)
Enhanced with AI (Adrak & ilaichi)

Generative AI

and Digital Pedagogies

Alexa Alice Joubin

ajoubin @ gwu.edu

